



## Ruthie Abbott Swafford

May 12, 2016

Ruthie Abbott Swafford, 71, passed Thursday, May 12, 2016 at ST. Francis Hospital - Bartlett, TN.

Born in Blytheville, AR, Mrs. Swafford had lived in Lakeland, TN most of her life. She had a long history in the real estate industry, before retiring from Delta Trust into her favorite full time role as "NeNe" to her immediate and extended grandchildren. Mrs. Swafford enjoyed many outdoor activities, including camping, fishing and gardening. She also enjoyed sewing, crafting picture frames, cooking and reading. She took great pleasure in spending time with her family.

Visitation will be held Saturday, May 14, 2016, 11:00 a.m.-1:00 p.m. at La Belle Haven Baptist Church, 4800 MS-305, Olive Branch, MS with the funeral service following at 1:00 p.m. in the chapel at La Belle Haven. Burial will be at Memorial Park Southwoods Cemetery. Coleman Funeral Home is in charge of arrangements.

Survivors include her husband, Michael A. Swafford of Lakeland, TN; one daughter, Stacey (Jeff) McCauley of Olive Branch, MS; one son, Billy (Debbie)Smith of Olive Branch, MS; two stepdaughters, Michelle Lowe of Paris, TN; Tracy Lowmax of Parsons, TN; one brother, James (Carolyn) Abbott of Covington, TN; two grandchildren, Colin McCauley and Megan

Smith.

She also leaves to cherish her memory two nephews, David (Celia) Abbott, their children Brooke and Emily; and Shane (Kimberly) Hopper and their daughter Brittnie; one niece, Deennea Gable and her daughter Jessica. As well as her great nephew, Ryan (Brett) Keele and their children Noah and Brookelyn.

Her parents, John Henry and Eva Beatrice Abbott, preceded Mrs. Swafford in death.

Online condolences may be left on the Tribute Wall at [www.colemanfuneralhome.com](http://www.colemanfuneralhome.com)

# Previous Events

## Visitation

MAY 14. 11:00 AM - 1:00 PM (CT)

LaBelle Haven Baptist Church  
4800 MS-305  
Olive Branch, MS 38654  
<http://labellehaven.org/home>

## Service

MAY 14. 1:00 PM (CT)

LaBelle Haven Baptist Church  
4800 MS-305  
Olive Branch, MS 38654  
<http://labellehaven.org/home>

# Tribute Wall



“ Coleman Funeral Home of Oxford created a Tribute Video in memory of Ruthie Abbott Swafford



---

**Coleman Funeral Home** - May 13, 2016 at 01:45 PM

SC

“ Ruthie I have just been thinking about you so much today and am so thankful you were such a big part of my life. Oh how I wish you were still here on Earth but I know you are at peace with God and your family now. It is a mess down here. Our government is out of control. I miss our phone calls. I miss you!



---

**Selma Cooley** - December 06, 2025 at 03:49 PM

SC

“ Ruthie my dear sweet friend you have been on my mind today and I have been reminiscing about all the wonderful memories I have of us growing up together in Dell. You coming over to watch Howdy Dowdy with me every day after school. Going to church together at Crossroads Baptist Church, and getting baptized at the same time in that ditch not far from our homes. I was so upset when you moved with your Mom and Dad to Memphis when you were in the fourth grade but It didn't keep us apart. I looked forward to your visits every time you got a chance to come. I am so glad we remained friends all those years. You were like a part of our family and you have left a empty space in my heart. I will never for get you and all the memories we made together! I still have a lot of pictures of us growing up. One particularly where we had to have the same winter coats. They were purple and black checks and we thought we were the World in those coats. I love that picture of us. Oh how I wish there was a phone line to Heaven. I have so much I would like to tell you and hear you tell me how wonderful it is up there! This world down here has gone crazy! Love you forever! Selma Cooley

---

**Selma Cooley** - May 06, 2024 at 11:38 PM

SC

“ This news just broke my heart. I had just talked to Ruthie a few weeks ago and she was getting the paperwork ready for her husbands retirement. I never knew that would be the last time I would get to talk to my dear, sweet friend. We were best of friends since we were in grade school. She moved to Memphis probably around 4th grade but we were able to keep in touch and still see each other ever now and then. They lived by us and we would meet at an electric pole that was half way between our houses when neither of us could go to the others house. I always knew she was just a phone call away and although we lived miles apart she was an important part of my life. Yes Heaven surely got another Angel. She was the best. My heartfelt sympathy goes out to the family. I miss you so much. Love Selma Cooley

---

**Selma Cooley** - June 05, 2016 at 09:21 AM

JT

“ I am writing this tribute to Ruthie for Patsy Newby, a resident of Kings Daughters and Sons Home and myself (Jo Ann Thweatt). My husband was also a resident of Kings Daughters and died six months ago (Cecil Thweatt). Ruthie was an inspiration to many people for her work with Patsy on the Kings Daughters Newsletter. Everyone looked forward to their work every month and learning about lives of other residents. Ruthie was a loving caregiver for her mother and a good friend to me. She will be greatly missed by everyone. I will continue pray for comfort for the family.

---

**Jo Ann Thweatt** - May 16, 2016 at 08:37 PM



“ *Full Of Love Bouquet was purchased for the family of Ruthie Abbott Swafford.*



May 13, 2016 at 08:40 PM

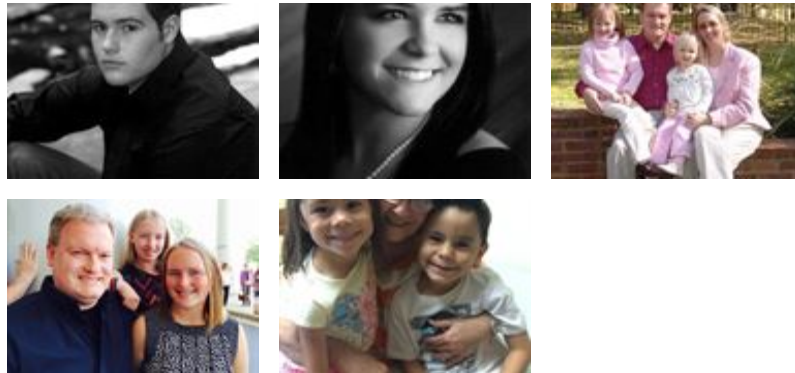


“ *Sweet Ms. Ruthie, always so caring with her family. Always had a smile and a hug for me. Never an unkind word for anyone*

Amy Henthorn - May 13, 2016 at 08:05 PM



“ *42 files added to the album LifeTributes*



Coleman Funeral Home - May 13, 2016 at 01:03 PM



“ *So sorry to hear about Ruthie's passing. Keeping the family in my thoughts and prayers.*



Robbie Hughes - May 13, 2016 at 11:26 AM