



## Jimmie Edna Wilburn

August 20, 1942 - January 2, 2020

Coleman Funeral Home of Oxford

Ms. Jimmie Edna Wilburn, 77, passed away Thursday, January 2, 2020, at Yalobusha General Nursing Home in Water Valley, MS. Visitation will be Saturday, January 4, 2020, from 11:00 a.m. to 1:00 p.m. at Coleman Funeral Home in Oxford, MS. A funeral service will immediately follow at 1:00 p.m. also at Coleman Funeral Home. Interment will be at Abbeville Cemetery in Abbeville, MS. Bro. Randy Hope will officiate. Coleman Funeral Home of Oxford is in charge of arrangements.

Ms. Wilburn was born in Abbeville. She was a very Godly woman who loved serving her Lord, Jesus Christ. She enjoyed helping others any chance she got. Ms. Wilburn believed that we are Jesus' hands and feet, and we should help anyone that is in need. She also thoroughly enjoyed flowers and working in her flower beds. Ms. Wilburn was known to be a hard worker throughout her life. She loved her family and friends, and will be dearly missed.

Ms. Wilburn is survived by three sons, Terry D. (Tina) Mills and Jimmy C. (Judy) Mills, both of Abbeville, and Thomas Wayne (Candy) Mills, Jr. of Flora, MS; a cousin and caretaker, Brenda Cooper of Water Valley, Linda Marquis of Oxford, and Bob Colston, of Abbeville; 9 grandchildren; and 11 great-grandchildren.

Ms. Wilburn is preceded in death by her parents, James S. Wilburn and Bertha Marie Frazier; and her brother, James S. Wilburn, Jr.

Donations and memorials in honor of Ms. Jimmie Edna Wilburn may be made to Samaritan's Purse (<https://www.samaritanspurse.org/our-ministry/donate-online>).

Online condolences may be left on the Tribute Wall at [www.colemanfuneralhome.com](http://www.colemanfuneralhome.com)

# Cemetery Details

## Abbeville Cemetery

CR 201  
Abbeville, MS 38601

# Previous Events

## Visitation

**JAN 4.** 11:00 AM - 1:00 PM (CT)

Coleman Funeral Home of Oxford  
601 Commerce Parkway  
Oxford, MS 38655  
(662) 234-3900  
info@colemanfuneralhome.com  
<https://www.colemanfuneralhome.com/>

## Funeral Service

**JAN 4.** 1:00 PM (CT)

Coleman Funeral Home of Oxford  
601 Commerce Parkway  
Oxford, MS 38655  
(662) 234-3900  
info@colemanfuneralhome.com  
<https://www.colemanfuneralhome.com/>

## Burial

JAN 4 (CT)

Abbeville Cemetery

CR 201

Abbeville, MS 38601

# Tribute Wall



“ Coleman Funeral Home of Oxford created a Tribute Video in memory of Jimmie Edna Wilburn

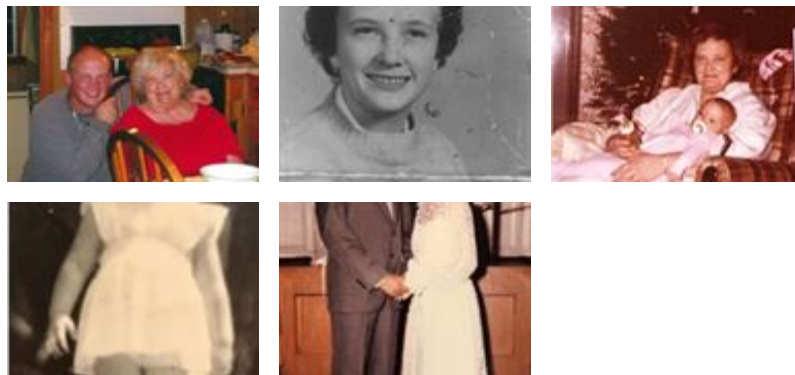


---

**Coleman Funeral Home** - January 03, 2020 at 02:40 PM



“ 47 files added to the album Life Tributes



---

**Coleman Funeral Home** - January 03, 2020 at 02:14 PM

AM

“ To family of Mrs. Wilbutn, May God give you comfort as only He can. My prayers are with you. God bless .

---

**Anna Beth McNeely** - January 03, 2020 at 11:40 AM

AM

“ *To family of Mrs Wil*

---

**Anna Beth McNeely** - January 03, 2020 at 11:34 AM